



REGIONAL SPECIALISED METEOROLOGICAL CENTRE -TROPICAL CYCLONES, NEW DELHI TROPICAL WEATHER OUTLOOK

DEMS-RSMC TROPICAL CYCLONES NEW DELHI DATED 13.07.2025

TROPICAL WEATHER OUTLOOK FOR THE NORTH INDIAN OCEAN (THE BAY OF BENGAL AND THE ARABIAN SEA) VALID FOR THE NEXT 168 HOURS ISSUED AT 0600 UTC OF 13.07.2025 BASED ON 0300 UTC OF 13.07.2025.

BAY OF BENGAL:

An upper air cyclonic circulation formed over northwest Bay of Bengal adjoining West Bengal and north Odisha coasts at 1200 UTC of 12th July 2025 and now lay over north Bay of Bengal at 0300 UTC of today, the 13th July 2025. The associated cyclonic circulation extended upto 5.8 km above mean sea level tilting southwestwards with height. Under its influence, a low-pressure area is likely to form over northwest Bay of Bengal and adjoining coastal areas of West Bengal and Odisha during next 24 hours.

Scattered low and medium clouds with embedded intense to very intense convection lay over north & adjoining central Bay of Bengal and north Andaman Sea. Scattered low and medium clouds with embedded moderate to intense convection lay over the rest of the Bay of Bengal and south Andaman Sea.

***PROBABILITY OF CYCLOGENESIS (FORMATION OF DEPRESSION) DURING NEXT 168 HRS:**

24 HOURS	24-48 HOURS	48-72 HOURS	72-96 HOURS	96-120 HOURS	120-144 HOURS	144-168 HOURS
NIL	NIL	NIL	NIL	NIL	NIL	NIL

***NOTE: EVERY 24HR FORECAST IS VALID UPTO 0300 UTC (0830 IST) OF NEXT DAY**

ARABIAN SEA:

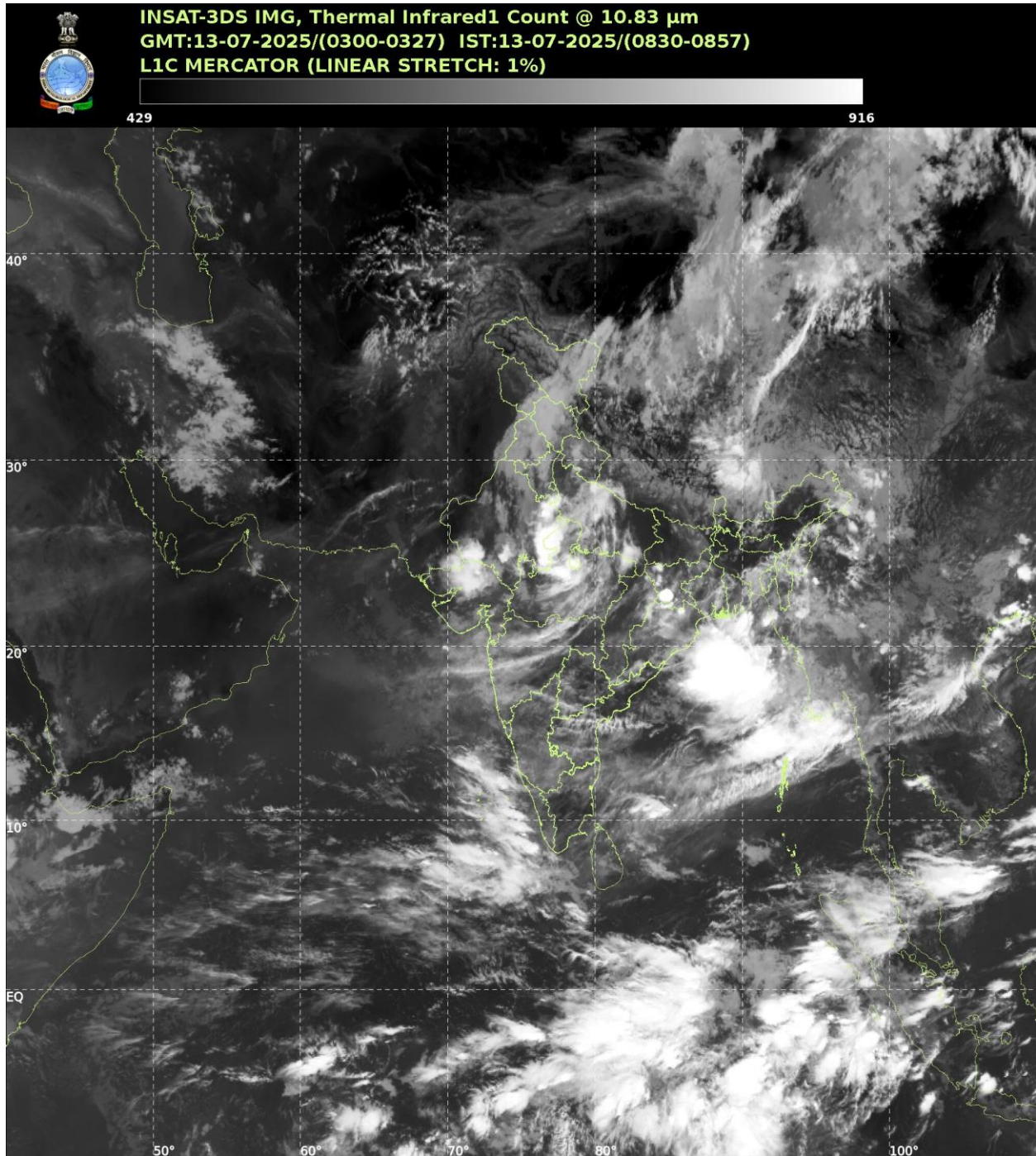
Scattered low and medium clouds with embedded moderate to intense convection lay over eastcentral adjoining southeast Arabian Sea off Karnataka-Kerala coasts and the Lakshadweep Islands area. Scattered low and medium clouds with embedded weak to moderate convection lay over the rest of the Arabian Sea, Maldives and Comorin area.

***PROBABILITY OF CYCLOGENESIS (FORMATION OF DEPRESSION) DURING NEXT 168 HRS:**

24 HOURS	24-48 HOURS	48-72 HOURS	72-96 HOURS	96-120 HOURS	120-144 HOURS	144-168 HOURS
NIL	NIL	NIL	NIL	NIL	NIL	NIL

***NOTE: EVERY 24HR FORECAST IS VALID UPTO 0300 UTC (0830 IST) OF NEXT DAY**

REMARKS: NIL



Cloud distribution: (a) Isolated: <25%, Scattered:25-50%, Broken: 51-75%, Solid:>75%, Convection Intensity: (a) Weak: Cloud Top Temperature(CTT)>-25°C,(b)Moderate:CTT:-25°Cto-40°C,(c)Intense:CTT: -41°Cto -70°Cand(d)Very Intense::Less than -70°C
PROBABILITYOFCYCLOGENESIS(FORMATIONOFDEPRESSION):NIL:0%,LOW:1-33%,MODERATE:34-66%ANDHIGH:67-100%
ThisisaguidanceBulletinforWMO/ESCAPPanelMembercountries.VisitrespectiveNationalwebsitesforCountryspecificBulletins